

DURA COAT™

POWDER COATINGS



An ISO 9001-2008 &
Crisil Rated Company



SIROHI CHEMTECH PVT. LTD.

EPOXY POLYESTER GLOSSY FINISH



GL WHITE-606
H103D9G



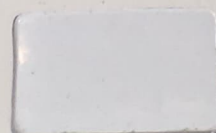
GL OFF WHITE
H131N9G



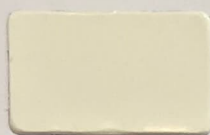
GL WHITE-R
H669R9G



GL CLASSIC WHITE
H742R9G



GL MILKY WHITE
H363D9G



GL IVORY-S.S
H676D9G



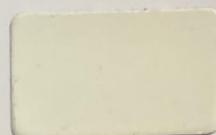
GL LT IVORY
H187D9G



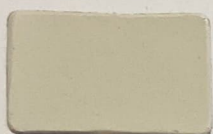
GL IVORY-T
H637T9G



GL PEARL WHITE-R
H328R9G



GL DARK IVORY
H253D9G



GL NEW IVORY
H130K9G



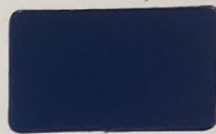
GL HAVELLS GREY
H496N9G



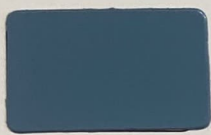
GL SIEMENS GREY
H274R9G



GL MUNSHEL GREY
H132P9G



GL OXFORD BLUE
H743R9G



GL SMOKE GREY
H240P9G (IS-692)



GL MJ GREY
H474N9G



GL DEEP BLUE
H138D9G



GL PEPSI BLUE
H224D9G



GL PURPLE
H142D9G



GL MID BUF
H314R9G



GL COOL GREY
H487D9G



GL TEAKWOOD BROWN
H143D9G



GL LEMON YELLOW
H139D9G



GL GOLDEN YELLOW
H312R9G



GL ORANGE
H166M9G



GL PINK
H228D9G



GL PO RED
H734R9G



GL SIGNAL RED
H544R9G



GL WINE RED
H744R9G



GL BUS GREEN
H745R9G



GL MAROON
H746R9G



GL COFFEE BROWN
H279D9G



GL D.A GREY
H519R9G

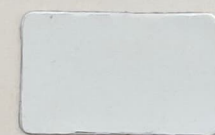


GL BLACK
H526D9G

PURE POLYESTER FINISH



PP SG RAL 9010
P255D6G



PP GL WHITE
P601R9G



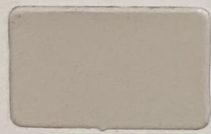
PP GL PEARL WHITE
P459D9G



PP GL LT IVORY
P308D9G



PP SG EURO GREY
P168D6G



PP GL BEIGE
P309D9G



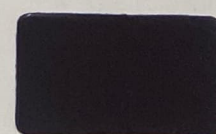
PP GL CUMMINS GREEN
P144D9G



PP MATT BLACK
P387D2G



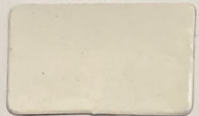
PP MATT GOLDEN BROWN
P747T2G



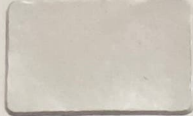
PP MATT CHOCO BROWN
P435D2G

"All shades are indicative only"

EPOXY POLYESTER SEMI GLOSSY FINISH



SG PURE WHITE-R
H444R3G (RAL 9010)



SG BROKEN WHITE-N
H318N3G



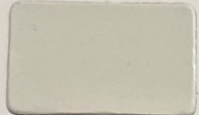
SG BROKEN WHITE-R
H214R3G



SG INTARCH WHITE
H121D3G



SG RAL 7035
H239D3G



SG GREY WHITE
H336D3G (RAL-9002)



SG NEW IVORY
H186D3G



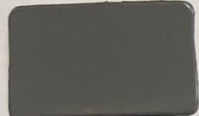
SG SIEMENS GREY
H110N3G



SG SMOKE GREY
H477D3G (IS-692)



SG LT GREY
H116D2G (IS-631)



SG BCH GREY
H718D3G



SG ULTRA BLUE
H169R3G



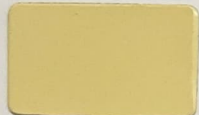
SG POPPY RED
H566D3G



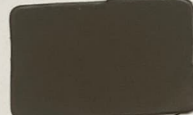
D.A GREY SG
H749D3G



SG GREEN
H261D3G



SG WOOD YELLOW
H153D3G



SG SAMPAN
H258D3G



SG BIEGE BROWN
H137D3G



SG H.W BROWN
H107D2G



SATIN BLACK
H108D2G

EPOXY POLYESTER MATT FINISH



MATT MISTY GREY
H126D1G



MATT PRIMER GREY
E218D0G



MATT DOVE GREY
H280D1G



MATT BISCUIT
H282D1G



MATT NUT BROWN
H393D1G



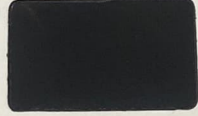
MATT VIP BROWN
H750T1G



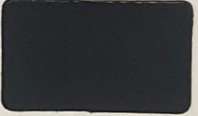
MATT COFFEE BROWN
H622D1G



MATT BLACK-M
H559D1G

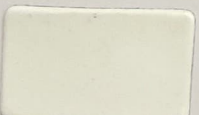


MATT BLACK
H525D1G

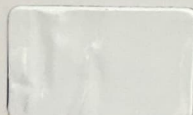


QS MATT BLACK
E160D0G

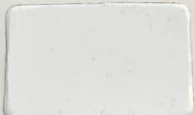
RAL FINISH



PP GL RAL 9010
P147D9G



PP GL RAL 9016
P148D9G



PP GL RAL 9003
P751D9G



PP SG RAL 9005
P752D6G



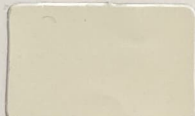
SG RAL 8017
H753D3G



STR RAL 7035
H105D1G



STR RAL 7032
H194D1G



SG RAL9001
H754D3G



SG RAL 6005
H755D3G



SG RAL 5015
H756D3G



GL RAL 9006
H757D9G



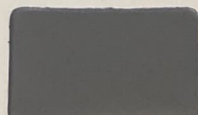
GL RAL 6021
H276D9G



SG RAL1001
H252D1G



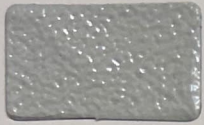
SG RAL 8002
H758D3G



SG RAL 7037
H759D3G

"All shades are indicative only"

EPOXY POLYESTER STRUCTURE FINISH



STR RETAL GREY
H104D1G



STR WHITE
H760R1G



STR HAVELLS GREY
H106D1G



STR SIEMENS GREY
H109D1G



STR SIEMENS GREY-B
H517R1G



STR IVORY
H761D1G



STR MUNSHELL GREY
H203D1G



STR LT GREY-IS631
H260D1G



STR PEPSI BLUE
H762R1G



STR VIP BLUE
H192D1G



STR AVON GREEN
H229D1G



STR LT ORANGE
H286D1G



STR ORANGE
H287D1G



STR SIGNAL RED
H201D1G



STR SMOKE GREY
H763D1G



STR BONE GREY
H764D1G



STR DA GREY
H198D1G



STR COMRACK GREY
H177D1G

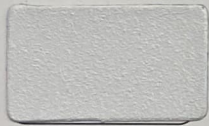


STR LEMON YELLOW
H765D1G

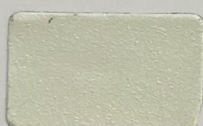


STR BLACK
H151D1G

EPOXY POLYESTER TEXTURE FINISH



TEX SIGNAL WHITE
H273D1G



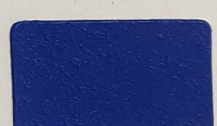
TEX IVORY
H265D1G



TEX SIEMENS GREY
H211D1G



TEX STONE GREY
H656D1G



TEX PEPSI BLUE
H243D1G



TEX KSP GREEN
H259D1G



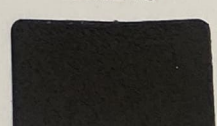
TEX GOLDEN YELLOW
H242D1G



TEX DUST GREY
H232D1G



TEX BLACK
H513D1G



TEX BLACK
H164D0G

SPECIAL FINISH



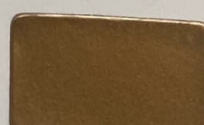
MIRROR SILVER GREY
H766R9G



METALIC SILVER GREY
H528R9G



TPR GOLD
H767D9G



METALIC GOLD
H768D9G



GLOSSY CLEAR
H697D9G



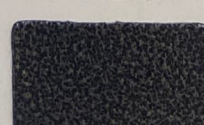
HAMER TON
H769D9G



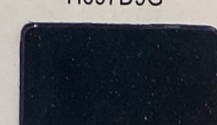
TPR RED
H770D9G



ANTIQUÉ GOLD
H212D1G



ANTIQUÉ SILVER
H202D1G



METALIC BLACK
H205D9G

"All shades are indicative only"



PRODUCT RANGE

- 1. EPOXY PRODUCTS:-** They are available in matt finish. These products have excellent corrosion resistance. They are recommended for interior use. These products are mainly used for Auto components, Panels, Hand tools, Brassware , Al-extrusions and many others.
- 2. EPOXY POLYESTER PRODUCTS:-**They are available in Glossy, Semi Glossy, Matt, Structure, Texture & Antique Finish. These products are easy to apply and have excellent decorative appearance. They are recommended for interior use. These products are mainly used for consumer durables, Office equipments, Computers and many others.
- 3. PURE POLYESTER PRODUCTS:-**They are available in Glossy, Semi Glossy and our specially developed product is available in Matt Finish also. These products have excellent Gloss retention, good leveling, over bake resistance, mar resistance and have excellent mechanical properties. They are recommended for both interior and exterior use.

RECOMMENDATIONS

- **Substrates that can be coated:-**Mild Steel, Hot dip/Electro-galvanized Steel, Stainless Steel, Aluminium, Brass and Copper.
- **Pre-treatment:-**A good pre-treatment lays the foundation for a good finish. The required pre-treatment for different substrate is:
 - ◆ Mild Steel :Zinc/Iron Phosphating
 - ◆ Aluminium:Chromate Conversion Treatment
 - ◆ Stainless Steel:Strong acid etching treatment
- **Application parameters:-**Voltage 60 to 90 KV
 - ◆ Hybrid Glossy Powder: 180° C object temperature for 10 minutes.
 - ◆ All Other Powders: 200° C object temperature for 10 minutes.
- **Powder Storage:-**Store in cool conditions (<30° C)
Stack height should not exceed five cartons
- **Packing:-** 10 Kg Cartons for all products.

NEW DEVELOPMENT

- Less than standard lot production facility is also provided instead of standard 300 kg. Lot for new development we can manufacture small lots of 30 kg. with some additional cost.